

OPENING DOORS SINCE 1843

Loveitts^{est. 1843}
THE ESTATE AGENTS

4 Woodend Croft
Coventry, CV4 9RN

£175,000



1



D

4 Woodend Croft

Coventry, CV4 9RN

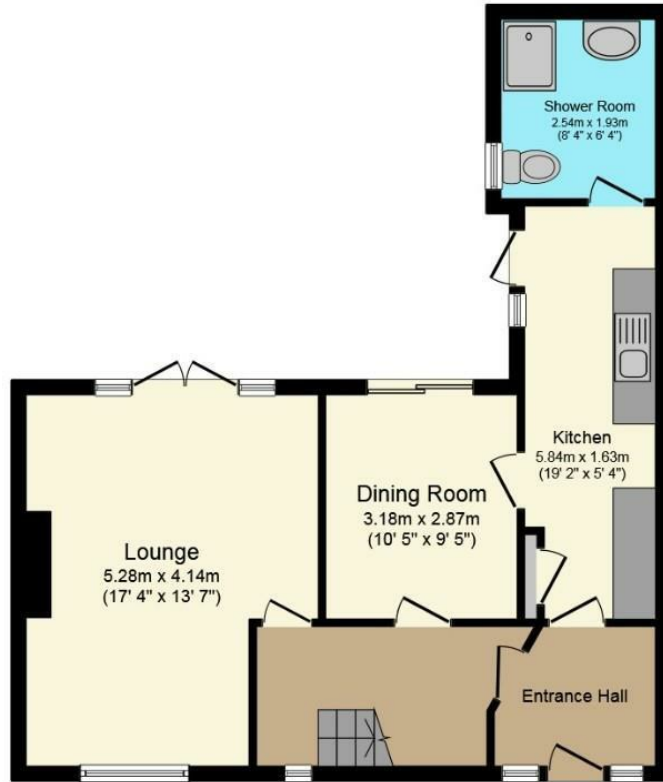
This well presented and extended mid terrace property offers spacious accommodation throughout which in brief comprises entrance porch, entrance hall with staircase to the first floor landing, spacious lounge with PVCu double glazed French doors leading onto the rear garden. Dining room having double glazed patio doors to the rear garden and leads to the extended kitchen having a range of eye and base level beechwood style units. Shower room with a modern white suite and a walk in shower ideal for an elderly/disabled person. First floor landing provides access to three bedrooms with the two main bedrooms having a range of fitted wardrobes and a further built in wardrobe in the third bedroom. Bathroom with a coloured suite and mixer tap shower. The property also benefits from gas fired central heating, electric storage heaters where specified and PVCu double glazing. Outside the frontage has been paved and over looks an open green. The enclosed rear garden is well maintained being laid mainly to lawn with established shrub borders and a paved patio area. Internal viewing is highly recommended to fully appreciate the accommodation being offered for sale with no upward chain.





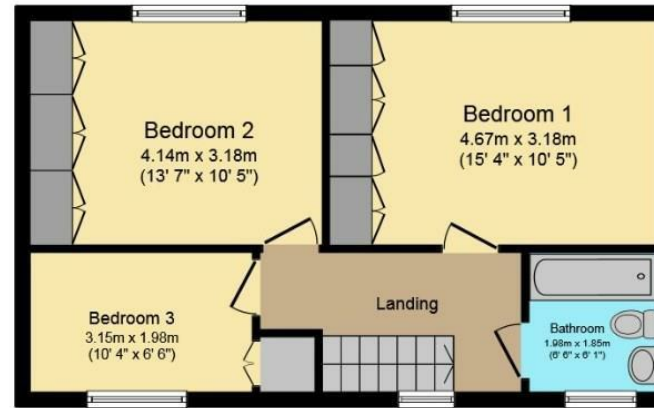
Floor Plan

Area Map



Ground Floor

Floor area 57.5 sq. m. (619 sq. ft.) approx

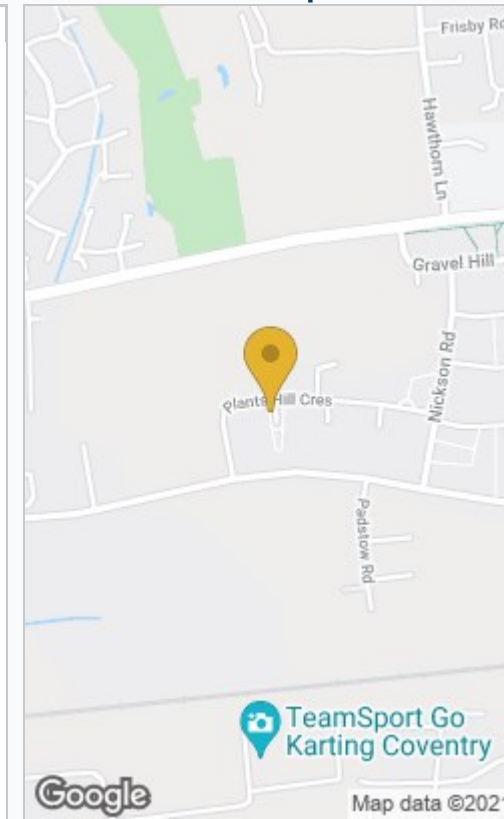


First Floor

Floor area 46.9 sq. m. (505 sq. ft.) approx

Total floor area 104.4 sq. m. (1,124 sq. ft.) approx

This Floor Plan is for illustration purposes only and may not be representative of the property. The position and size of doors, windows and other features are approximate. Unauthorized reproduction prohibited. © PropertyBOX



Energy Efficiency Rating

	Current	Potential
Very energy efficient - lower running costs		
(92 plus) A		
(81-91) B		83
(69-80) C		
(55-68) D	60	
(39-54) E		
(21-38) F		
(1-20) G		
Not energy efficient - higher running costs		
England & Wales		EU Directive 2002/91/EC



Coventry
29 Warwick Row, Coventry CV1 1DY
024 7625 8421

Registered in England & Wales Company no. 7558151